



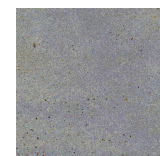


Architectural floor plan of a room with a red boundary. The plan shows a rectangular room with a hatched rectangular area (1) and two arched alcoves (2 and 3). Dimensions are given in millimeters. Total width is 264 mm, total height is 290 mm. Internal dimensions include 112 mm, 134 mm, 18 mm, 129.5 mm, 17 mm, 100.5 mm, 77 mm, 209 mm, 88 mm, 209 mm, 19 mm, 247 mm, 77 mm, 202 mm, and 16 mm. Text labels include  $H_{\text{пом}} = 317$  and  $H_{\text{р.}} = H_{\text{окна}} = 207$ .

[illegible]

- KB-24

-  - ściany istniejące
-  - zamurowania
-  - wyburzenia



A3 str. 92